



KCPSS SEC 2 ENGAGEMENT SESSION 2024

15 February 2024



Kuo Chuan Presbyterian Secondary School



About Kuo Chuan Presbyterian Secondary School

Kuo Chuan Presbyterian Secondary School is a co-educational government-aided secondary school located in Bishan.

Our Mission and Vision

School Mission

With God as our guide, we nurture students who learn with confidence, excel with grace, lead with passion and serve with purpose in our communities

School Vision

A School on A Hill, shining a light for all



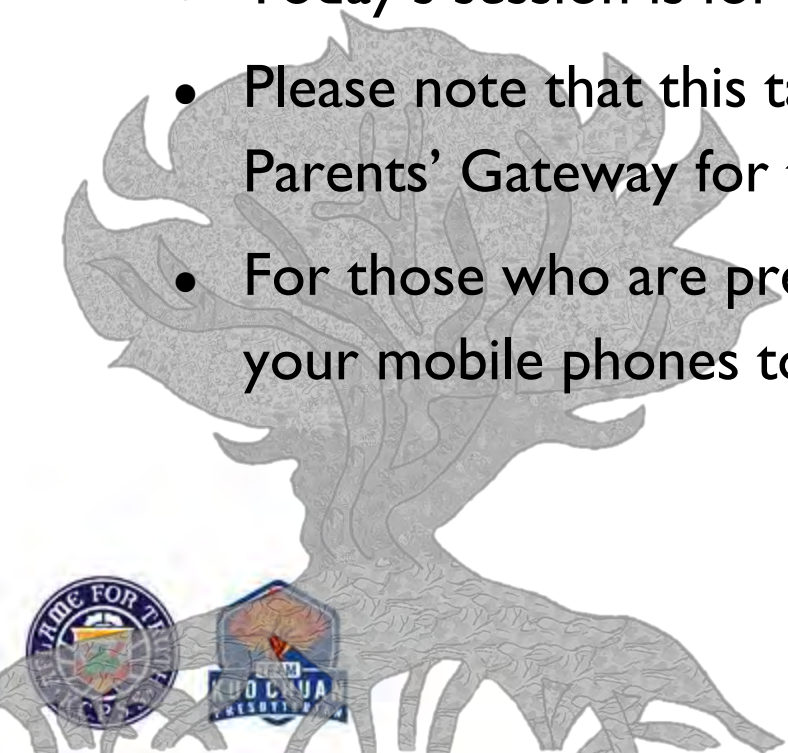
Kuo Chuan Presbyterian Secondary School



Some Housekeeping Matters



- Today's session is for Sec 2 parents
- Please note that this talk will be recorded and shared on Parents' Gateway for those who may have missed it.
- For those who are present here in person, kindly switch your mobile phones to silent mode.



Kuo Chuan Presbyterian Secondary School



Overview of Programme



Welcome

Principal's time

What to expect in 2024

Subject Options

Education & Career Guidance

Q & A



Kuo Chuan Presbyterian Secondary School



Welcome



- Mr Justin Tan, Principal
- Mrs. Esther Chee, Vice-Principal
- Ms Jamie Yee, Vice-Principal (Admin)
- Mr Tan Say Pin, HOD/CCE
- Ms Michelle Cheong, HOD/ICT
- Mr Patrick Goh, Year Head/LS
- Ms Ho Shiao Hwee, Assistant Year Head/Lower Sec
- All HODs



Kuo Chuan Presbyterian Secondary School



Navigating Sec 2



- Starting the year right
- Sustaining good momentum
- Supporting your child



Kuo Chuan Presbyterian Secondary School



Starting the Year Right



- Provide **healthy support** for your child as he/she makes a transition to new experiences
- Be open to **new types** of learning and challenges that your child will face
- Encourage your child to take **ownership** of challenges and to grow by overcoming them with the support of peers and teachers



Kuo Chuan Presbyterian Secondary School



Sustaining the Momentum



- Engage your child to **stay updated** about his/her learning and growth
- **Learn more** about educational pathways and the changing economy
- Use opportunities to **support** your child's learning in different areas



Kuo Chuan Presbyterian Secondary School



Supporting Your Child



- Tune into your child's progress and learning by **listening** and **observing**
- **Work with** your child's teachers and the school to understand what's new
- Give our partnership **time, space and respect** so that we can do what's best for your child and you



Kuo Chuan Presbyterian Secondary School



What to expect in 2024?

Ms Ho Shiao Hwee
Assistant Year Head/ Lower Sec



Kuo Chuan Presbyterian Secondary School



Growing our KCPians



Secondary 1

Grow with
GRACE

Secondary 2

Connect with
GRACE

Secondary 3

Shine with
GRACE

Secondary 4/5

Excel with
GRACE

G . R . A . C . E .

God-Fearing . Resilience . Agape . Conscientiousness . Empathy



Kuo Chuan Presbyterian Secondary School



Supporting Your Child Through Sec 2



Key changes	Skills required
<ul style="list-style-type: none">● Balancing multiple and greater intensity of commitments● Managing peer influence● Being a senior to the Sec 1s / more leadership opportunities● Figuring out what subjects to take in Sec 3	<ul style="list-style-type: none">● Responsible Decision-making● Time management● Emotional/Stress management● Learning to work in teams & leading others



Understanding and Supporting Our KCPians



1. **School Support:** Level FTs, Year Heads, HODs, School Counsellor, SEN Officer working as a team
2. **Conversations with Form Teachers**
3. **Peer Support:**
 - Class Committee (including KCP Befrienders)
 - Cohort-based Activities (for bonding and learning together)



Kuo Chuan Presbyterian Secondary School



Our Sec 2 Form Teacher Team



2 Faith
Mr Foo Seng Hong



2 Joy
Ms Rachel Lee



2 Love
Ms Rebecca Kang



2 Peace
Mr Edwin Tan



Kuo Chuan Presbyterian Secondary School



Our Sec 2 Form Teacher Team



2 Grace
Ms Tan Hui Si



2 Hope
Mrs Esther Tay



2 Praise
Mr Samuel Chan



Opportunities to Lead & Serve



- Variety of leadership platforms

Platform	Specific Leadership Roles
School-wide	Student Leadership Board (SLB)
CCA	Lower Sec in-charge
Class	Monitors, Assistant Class Monitors, Class Committee Members, Subject Representatives



Kuo Chuan Presbyterian Secondary School



Opportunities to Lead & Serve



Values-in-Action (VIA) Theme: Developing a Service Heart for the Elderly

- Class-based activities to work with assigned beneficiaries
- From understanding the current efforts to promoting social awareness among peers on relevant social issues in Singapore



Kuo Chuan Presbyterian Secondary School



How do we help our students flourish?

Building a Growth Mindset



Cultivating Gratitude



Setting Goals



Kuo Chuan



Student's Sharing of Her Sec 2 Journey



Sharing by KCPian Megan Jolie Tan



Kuo Chuan Presbyterian Secondary School





National Day Parade 2023



Spin Doctors





VIA programme



Subject Options for 2024

Ms Michelle Cheong
HOD ICT



Kuo Chuan Presbyterian Secondary School



Academic Endeavour



- Secondary 3 sets the foundation for post-secondary pathways.
- In supporting your child in their decision to choose the subjects, it is important to engage them in conversation of the possible career options they wish to pursue in future.



Kuo Chuan Presbyterian Secondary School



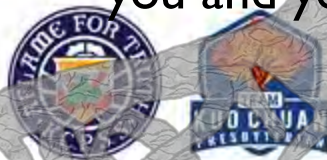
New Subjects in Upper Sec



- Your child/ward may be unfamiliar with several new subjects that were not offered in lower sec.
- These include Additional Mathematics, Principles of Accounts, Chemistry, Biology, Physics, Combined Humanities (SS/Geo) and (SS/His)
- We have included some FAQs to help you and your child plan ahead!

Subject Brief

- Principles of Accounts
- Additional Mathematics
- Chemistry
- Biology
- Physics
- Combined Humanities



Kuo Chuan Presbyterian Secondary School



Principles of Accounts - What is it?



- Recording and processing of business transactions
- Evaluate business performance and facilitate decision-making
- **Age-appropriate** and **relevant accounting knowledge**, skills and values.
- How businesses use accounting and non-accounting information to make decisions



Kuo Chuan Presbyterian Secondary School



Additional Mathematics - What is it?



- Together and on par with “Pure Science”
- Algebra, Geometry & Trigonometry and Calculus
- Requires a **strong foundation** in
 - Algebraic manipulation and
 - Mathematical Reasoning
- Conceptual understanding, process skills such as reasoning, communication and connections, thinking skills, and applications
- Link across many topics and may be abstract



Kuo Chuan Presbyterian Secondary School



FAQ: Does my child need A-Math to get into JC or poly?



Junior Colleges (JC)

- Can be considered as one of the LIR5 subjects for admission
- Generally, JCs prefer students to have A Math in order to take H2 Math
- Do not need A Math to take up H1 Math in JC

Polytechnic

- A Math can be included as one of two Relevant Subjects for ELR2B2 (Need only one Mathematics Subject – can be either Mathematics or A Math)
- A Math is NOT compulsory for all Poly Courses, including Engineering.



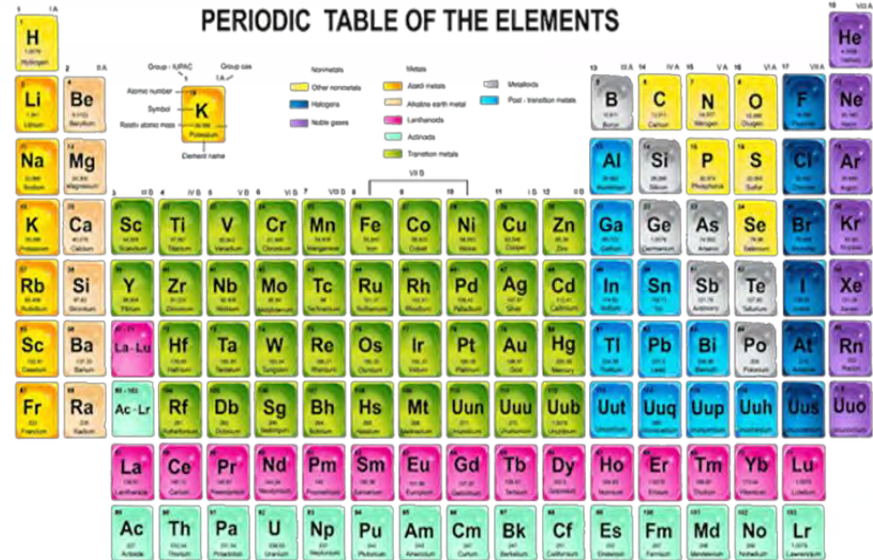
Kuo Chuan Presbyterian Secondary School



Chemistry - What is it?

- It is the study of matter, its composition, properties and reactivity.
- All students will study chemistry either Science (Chemistry) or Chemistry. Science (Chemistry) is a combined science subject taken with Science (Physics) or Science (Biology)

PERIODIC TABLE OF THE ELEMENTS



The periodic table displays elements from Hydrogen (H) to Oganesson (Og). It is organized into periods (rows) and groups (columns). Key features include:

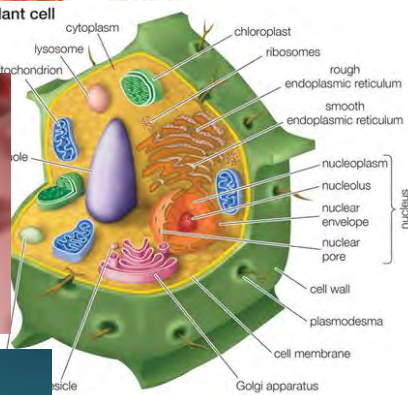
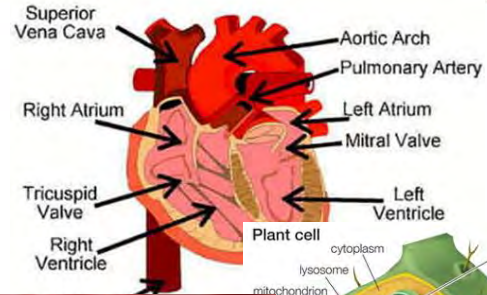
- Groups:** Labeled 1 through 18.
- Periods:** Labeled 1 through 7.
- Color Coding:** Elements are color-coded by groups: Group 1 (orange), Group 2 (yellow), Groups 3-10 (green), Group 11 (blue), Group 12 (light blue), Groups 13-18 (purple).
- Labels:** Each element box contains its symbol, atomic number, and name.
- Special Features:** A callout box for Potassium (K) shows its atomic number (19), symbol (K), name (Potassium), and atomic mass (39.0983).



Biology - What is it?

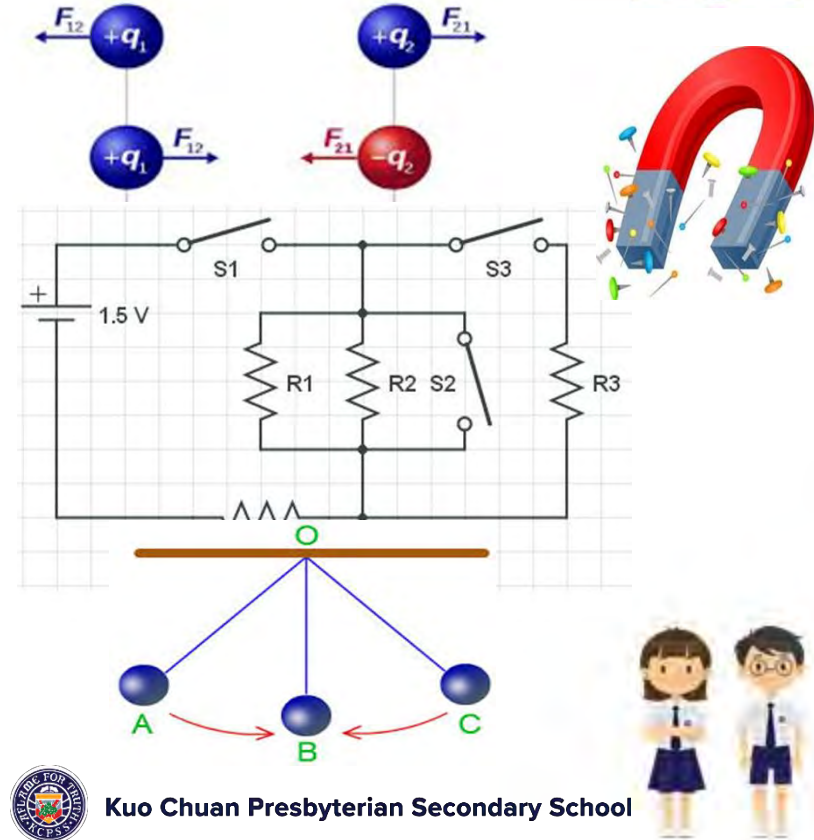


- Biology is a natural science concerned with the study of life and living organisms, including their structure, function, growth, evolution, distribution, identification and taxonomy.
- Students usually enjoy studying biology because they find it very interesting and relatable, because biology is about living things.



Physics - What is it?

- Physics the study of matter and its motion and behaviour through space and time, along with related concepts such as energy and force.
- Many students chose physics because of its application to engineering courses in tertiary education



FAQ: Does my child need Pure Science to get into JC or poly?



Junior Colleges (JC)

- Pure Science is not a requirement for entrance to JC. However in order to offer H2 Sciences, a distinction (A1/A2) is required for combined science.
- JC students do not offer triple H2 Sciences as they require a contrasting subject at H2 or H1 level. Biology is not compulsory in order to take up Medicine in University.



Kuo Chuan Presbyterian Secondary School



FAQ: Does my child need Pure Science to get into JC or poly?



Polytechnic

- Science (Pure or Combined) can be included as one of two Relevant Subjects for ELR2B2 (Need only one Mathematics or Science Subject)
- Physics is not compulsory for all Polytechnic Engineering Courses



Kuo Chuan Presbyterian Secondary School



Humanities - What is it?

Humanities is the branch of knowledge associated with the relationship between humans and their culture/history, humans and their environment and humans with other humans in relation to their society.

Combined Humanities is a single subject comprising Social Studies (SS) and elective History, Geography or Literature. SS is a new subject for the students as it is not offered in the Lower Secondary level. For SS the focus is on Singapore and its relationship with the world.

Geography



History

SELECT YOUR
WWII LEADER



Social Studies



Kuo Chuan Presbyterian Secondary S

FAQ: Is it better to take SS+Hist or SS+Geog? What should my child consider?



- First and foremost the interest of the child is paramount in the decision making.
- We need to consider the aptitude of the child in relation to choosing between learning Geography versus learning History.
- For SS and History the assessment is similar so if your child has a flair for source-based questions, then learning History would be beneficial.



Kuo Chuan Presbyterian Secondary School

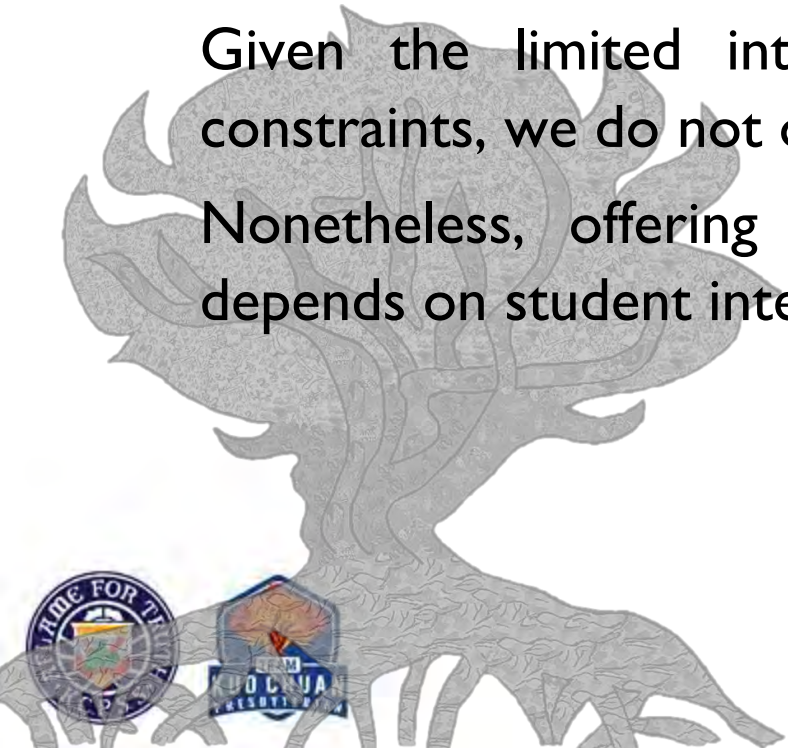


FAQ: Will Pure History or Pure Geography be offered?



Given the limited interest from students and resource constraints, we do not offer Pure History or Geography.

Nonetheless, offering these subjects in the near future depends on student interest and availability of resources.



Kuo Chuan Presbyterian Secondary School



How should I choose my subjects?



Interest and passion for the subject

Relevance to future areas of learning

Aptitude



Kuo Chuan Presbyterian Secondary School



Approach for Subject Allocation



Allocation of subjects are based on merit, student choice and availability of school resources.

Using the Sec 2 overall results, students will be allocated their preferred subjects:

- If they meet the subject criteria
- In the order of preference of subjects indicated
- If there is a sizeable demand of the subject (that is 15 or more students)



Kuo Chuan Presbyterian Secondary School



G3 Posting Group



All students will offer a minimum of 7 Subjects from various disciplines.

Students who have met the criteria will be offered the optional 8th Subject.



Kuo Chuan Presbyterian Secondary School



Subject Criteria (G3)

1

English

2

Mother
Tongue
/HMT

3

Elementary
Math

4

Chemistry
Sci(Phy/Chem)
Sci(Bio/Chem)

5

A Math
Literature
POA

6

Combined
Humanities
SSG/SSH/SSL

7

Physics
Biology
D&T
Art

8

Physics
Biology
Literature
Music (external venue)

OPTIONAL
8th
Subject

*A Math and Literature may be taken at less demanding level (this is interest-based and will not be computed into post-secondary admissions)



Subject Criteria (G3)



Subject	Criteria
Higher Mother Tongue	Overall $\geq 70\%$ Sec 2E Mother Tongue $\geq 80\%$
Pure Science	Sec 2E Science $\geq 60\%$
Additional Mathematics	Sec 2E Mathematics $\geq 60\%$
Literature	Sec 2E Literature $\geq 65\%$

Students who do not meet the criteria for A Math and Literature, These two subjects can be offered at a less demanding level (exposure and interest)

Subject Criteria (G3)

Criteria for offering optional 8th subject (Literature or Pure Biology/Pure Physics)

Criteria 1	Sec 2E Overall $\geq 70\%$	
Criteria 2	Literature	Pure Biology / Pure Physics
	Sec 2E Literature $\geq 65\%$	Sec 2E Science $\geq 70\%$



G2 Posting Group



All students will offer a minimum of 6 Subjects from various disciplines.

SBB students will offer some subjects at a more demanding level.



Kuo Chuan Presbyterian Secondary School



G2 Posting Group



1

English

2

Mother
Tongue

3

Elementary
Math

4

Combined
Humanities
SSG/SSH

5

Sci Phy Chem
Sci Bio Chem

6

D&T A Math
Art POA



Kuo Chuan Presbyterian Secondary School



Subject Criteria (G2)

Specific Subject Criteria

Subject	Criteria
O Level Mother Tongue	Sec 2N Mother Tongue \geq 75%
O Level Art	Sec 2N Art \geq 75%
O Level D&T	Sec 2N D&T \geq 75%



Subject Based Banding (SBB)



For N-Level students offering O-Level subjects (SBB), their grades will be converted to the N(A)-Level grades for admission to Poly Foundation Programme (PFP)

GCE 'O' Level Grade	GCE 'N' Level Grade
A1 – B 3	1
B4 – C6	2
D7	3



Progression Opportunities After N Levels

- Sec 4 (G2) students have the following progression opportunities:



**Direct-Entry-Scheme
to Polytechnic
Programme (DPP)**



**Polytechnic
Foundation
Programme (PFP)**



Nitec Programmes



Secondary 5 N(A)

- Students must satisfy the minimum entry requirements.
- A strong literacy and numeracy foundation would ensure students are better prepared for these progression pathways.
- Therefore, students are encouraged to deepen their knowledge in **English, Mathematics and Science**.

Subject Allocation Timelines



Month	Item
February	Briefing for parents
May	Sec 2 Subject Taster 2024
August	Briefing for students
October	Submission of subject preferences after examination results
November	Release of subject allocation results



Kuo Chuan Presbyterian Secondary School



Contact us for further enquiries

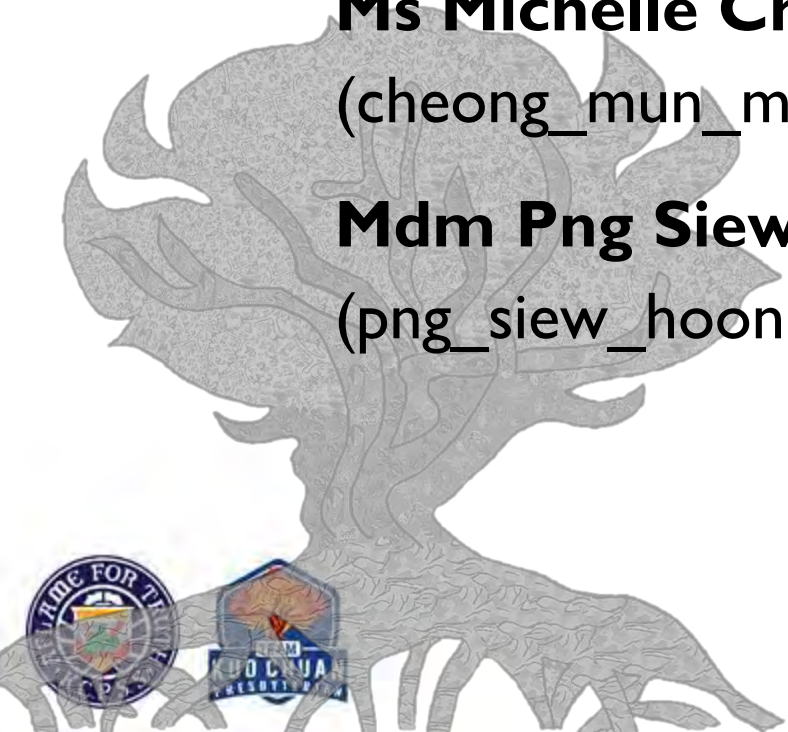


Ms Michelle Cheong

(cheong_mun_mun_michelle@schools.gov.sg)

Mdm Png Siew Hoon

(png_siew_hoon@schools.gov.sg)



Kuo Chuan Presbyterian Secondary School



Supporting Your Child's ECG Journey



Education and Career Guidance

Mr Tan Say Pin
HOD CCE



Kuo Chuan Presbyterian Secondary School

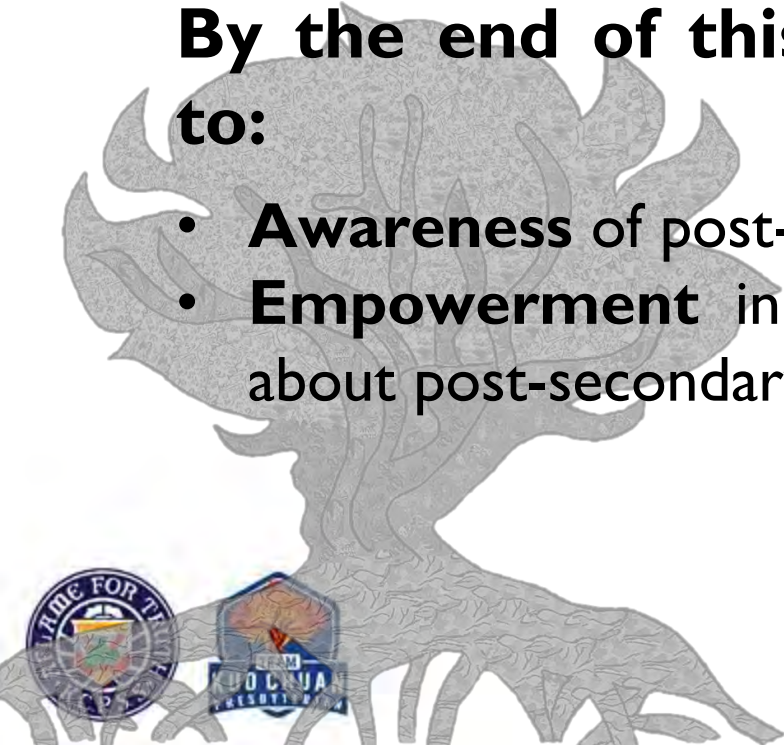


Objectives



By the end of this sharing, you should be able to:

- **Awareness** of post-secondary education pathways
- **Empowerment** in your conversations with your child about post-secondary education choices



Kuo Chuan Presbyterian Secondary School



3 ECG Questions



Where Do I
Want To Go?

- Explore possible Courses & Careers

Where Do I
Want To Go?
**Exploring
Opportunities**

- Decide on further education options

How do I get
there?

- Know yourself and the world around you better

Who am I?

Who Am I?
**Discovering
Purpose**

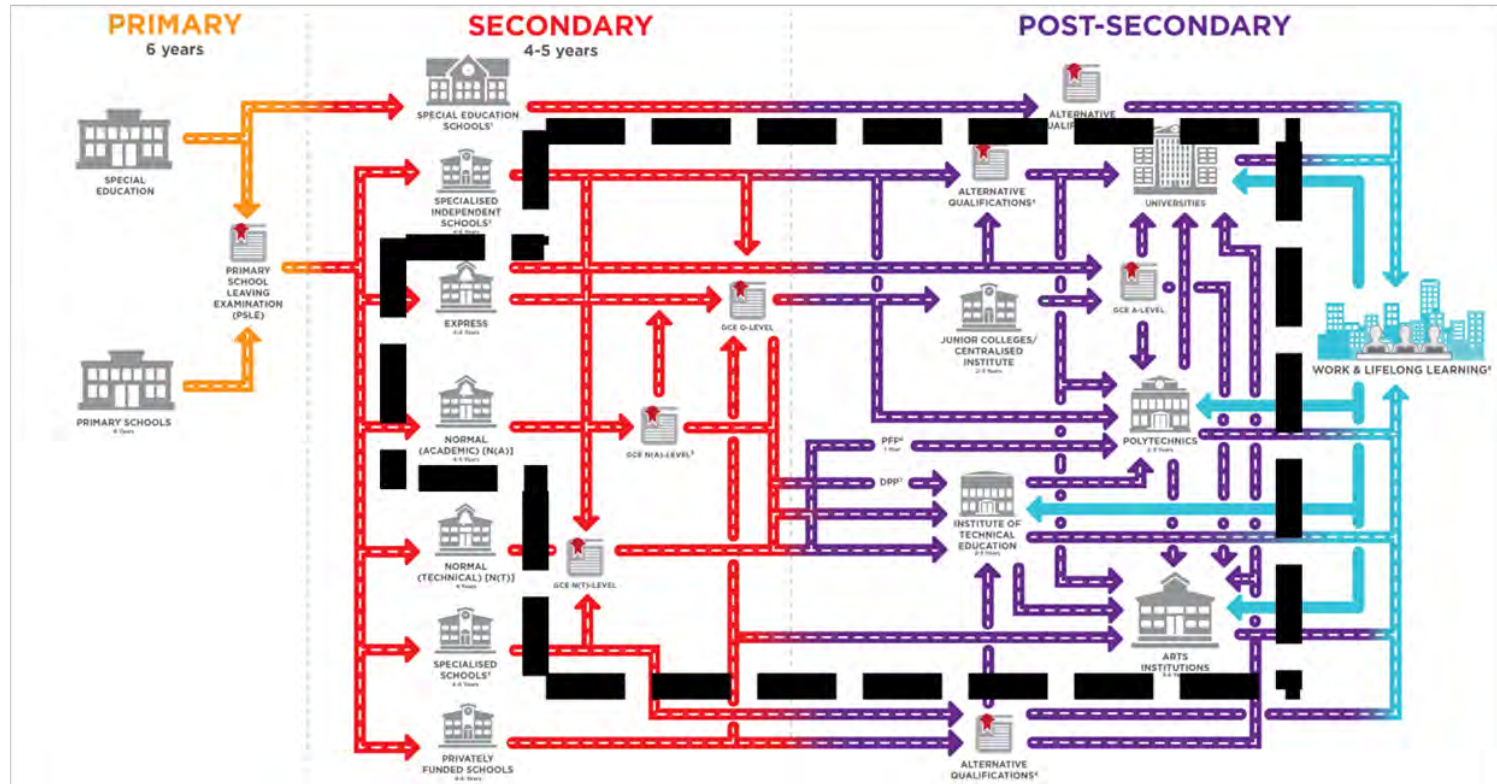
How Do I Get There?
**Staying
Relevant**

Education & Career Guidance

- **Understand** your child as an individual
- **Enable** your child to explore viable education and career options, and make plans
- **Pathways** towards that goal



Singapore's Education System: An Overview



Supporting Your Child



Questions Our Child May Have ...

Subject Combination

Which Subject Combination should I take?



I Don't Know

I don't know what I want to be yet, but I know I love Literature. How now?



Education Pathways

Which Education Pathway should I choose?



Career Aspiration

Do I know my career aspiration yet?



Parents' Role in ECG...

Facilitator / Supporter

I see myself as a facilitator and supporter instead of the "director" of my children's decisions

Appreciate them for who they are

I recognise that my children are unique with their own values, interests, strengths, personality and skills.

Belief in their growth

I believe that my children's abilities can grow through dedication and hard work.

Appreciate all professions and contributions

I appreciate all professions and acknowledge their respective contributions to Singapore



JC or Poly?



***Which is a suitable option to
prepare your child for the
future?***

Answer?

Ask more questions!



Kuo Chuan Presbyterian Secondary School



How Can ECG Help Our Students?



Who am I?
Discovering Purpose

Help students discover their

- Strengths
- Interests
- Values
- Personality
- Role in Community/Society

Where do I want to go?
Exploring Opportunities

Help students

- Explore possibilities/pathways
- To be open-minded and be prepared for possible opportunities

How do I get there?
Staying Relevant

Encourage students to

- Develop S.M.A.R.T goals and action plans
- Research on updated school information
- Consult trusted adults
- Continue to learn and grow



School

Polytechnic	Junior College/Millennia Institute
Specific area related to career aspiration where learning takes place in an applied manner with direct relevance between study and work.	In-depth study of a specific content area in academic studies that is more conceptual and theoretical .
Work-ready upon graduating with a diploma. May choose to <i>continue in university</i>	Graduate with A Levels/IBDP that prepares one for university (subject to meeting admission requirements)
More self-directed learning with lecturers as advisors.	Contains Routine of a school setting with teacher guidance.

Which course?

Which poly?

What is the cut-off point?

Should I try for EAE?

Am I ready to commit to a specific course/poly?

Which JC? A Levels or IBDP?

Should I take Arts or Science stream?

What subject combination should I take in JC?

Should I try for DSA? What is my niche area?

Am I ready to commit to a specific JC?

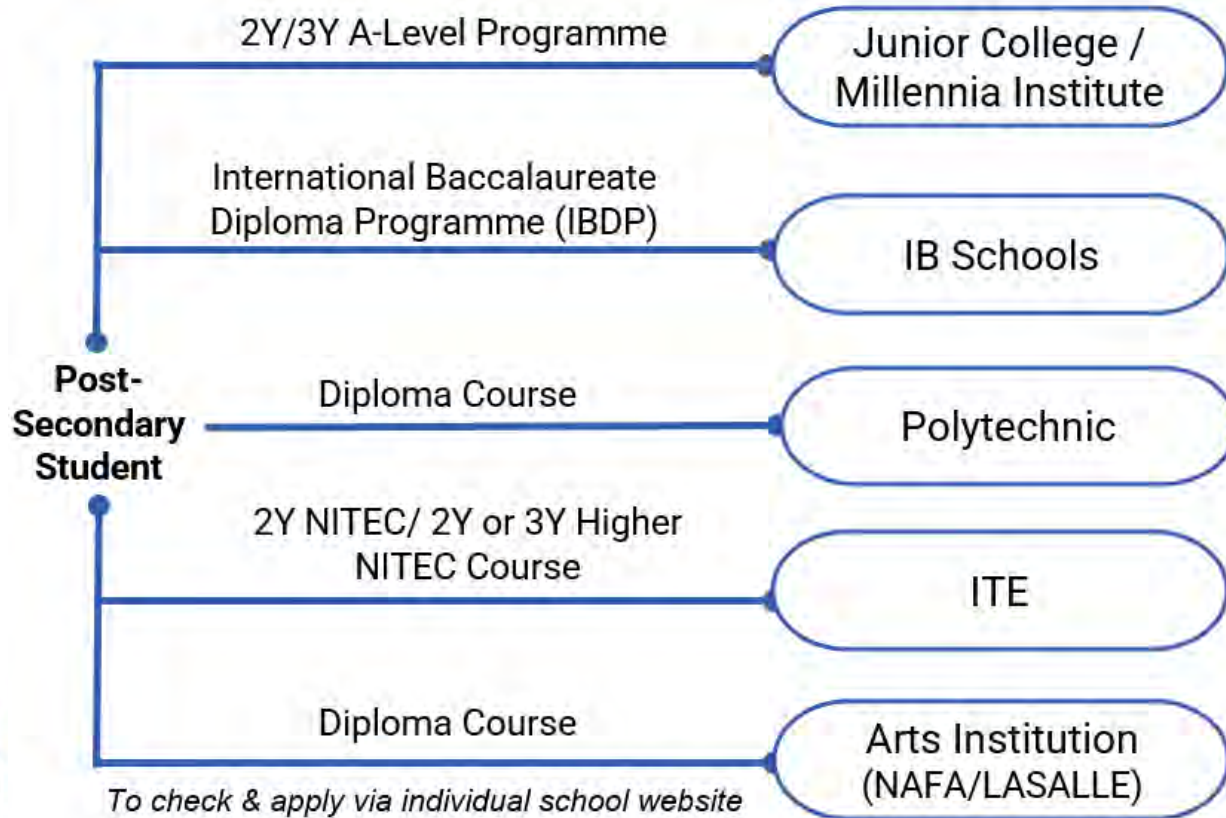
JC or Poly?

**JC & Poly are viable options for routing into
university education**

6 Publicly-Funded Autonomous Universities



Alternative Pathways



'A' Levels

1. Junior College (JC): $L1R5 \leq 20$ (2-year course)
2. Millennia Institute (MI): $L1R4 \leq 20$ (3-year course)



Scan to find out
more about JCs @
MOE School Finder



Legend	
CCA	Co-Curricular Activities
CCE	Character & Citizenship Education
PE	Physical Education
GP	General Paper
PW	Project Work
KI	Knowledge & Inquiry
VIA	Values in Action

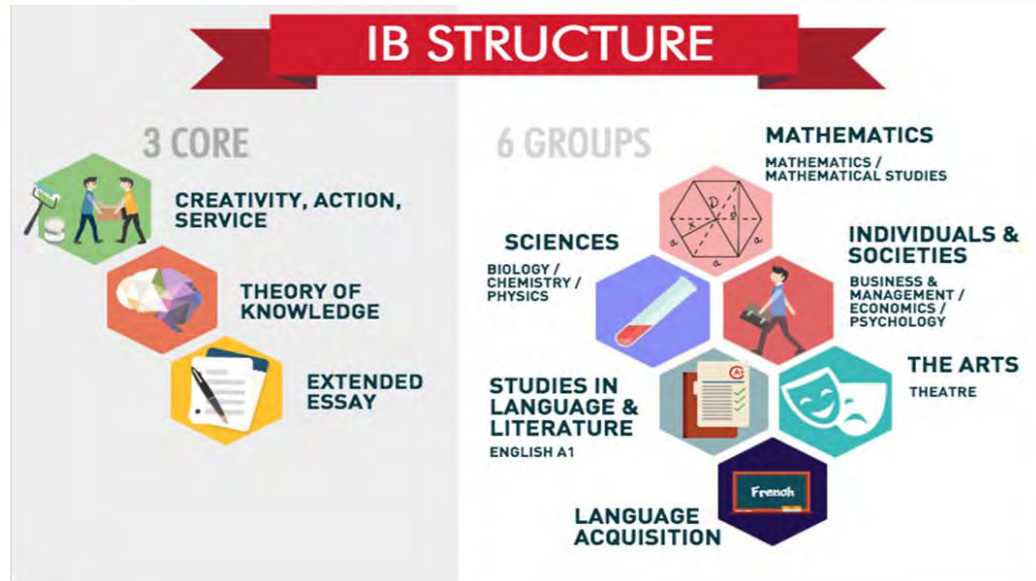
There are some subjects at 'A' level where students will have to meet the stipulated requirements taken at 'O' Level. *The requirements differ for each JC so please check the respective JC's website for details.*



Source: A-Level curriculum and subject syllabuses | MOE



The International Baccalaureate Diploma Programme (IBDP)



3 Core Subjects AND 3 Higher Level Subjects + 3 Standard Level Subjects

Students will have to meet the stipulated requirements of some subjects and requirements may differ for each IB school. Please check the respective school's website for details.



Kuo Chuan Presbyterian Secondary School



Polytechnic: Minimum Entry Requirement

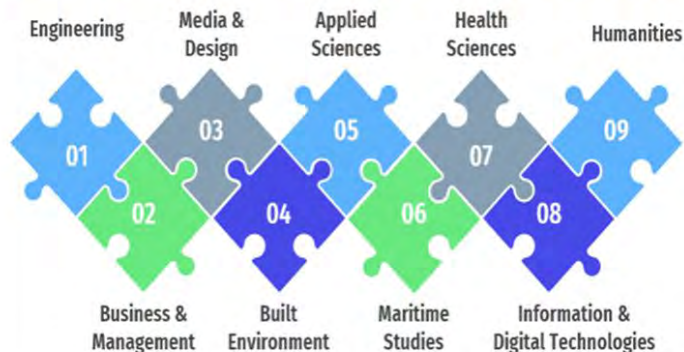


Scan to find out more
about Polys @ MOE
Course Finder

- Net ELR2B2 (English, Relevant 2, Best 2 Subjects) ≤ 26
- Meet the minimum entry requirements of preferred course
- Relevant Subjects (R2) vary from course to course

Subjects	English Language	Mathematics (Elementary/Additional)	Net ELR2B2
Grades	A1 to C6/D7*	A1 to C6/D7*	≤ 26

Course Clusters in Polytechnic



esbyterian Secondary School



ITE: Minimum Entry Requirement



Scan to access ITE
Course Booklet 2024

2-Year Higher Nitec Courses at Institute of Technical Education (ITE) for O-Level						
Business & Services / Design & Media				Applied Sciences/ Architecture / Engineering / ICT		
(ELB4-A)		(ELR1B3-B)		(ELR2B2-C)		
EL	English Language	EL	English Language	EL		English Language
B4	Best 4 other subjects (Excluding CCA)	R1	E Math/A Math/ POA	R2	1 st Subject	E Math/A Math
		B3	Best 3 other subjects (Excluding CCA)		2 nd Subject	Science^ D&T
			B2		Best 2 other subjects (Excluding CCA)	

Note: To be eligible for admission to Polytechnics or ITE, students must also meet the minimum entry requirements (MER) of the course.

[^] Science: Can be Combined Science or Pure Chemistry/ Physics/ Biology.



Kuo Chuan Presbyterian Secondary School



N-Level Alternative Pathways

1. Poly Foundation Programme (PFP)
2. Direct-Entry-Scheme to Polytechnic Programme (DPP)
3. Institute of Technical Education (ITE)

	Polytechnic Foundation Programme (PFP)	Direct-Entry-Scheme to Polytechnic Programme (DPP)	Institute of Technical Education (ITE)	Nanyang Academic of Fine Arts (NAFA)
Aptitude Based Admission			EAE (3 choices)	
Merit Based Admission	PFP (5 choices)	JIE 'H' (12 choices)	JIE 'N' (12 choices)	Apply direct
Requirements	ELMAB3 ≤ 12	ELMAB3 ≤ 19	Best 4 N-level ≤ 20	ELMAB3 ≤ 15
Requirements	Polytechnic 1 year Foundation + 3 years Diploma	ITE 2 years + 10 weeks <u>Higher Nitec</u> ↓ GPA ≥ 2.5 or GPA ≥ 3.0 2-3 years Diploma	ITE 2 years <u>Nitec/</u> 3 years <u>Higher Nitec</u> ↓ ITE <u>Higher Nitec/</u> Poly/ Work Study Diploma	NAFA 1 year Foundation + 3 years Diploma



Admissions Pathways to ITE

'N' Level Results

** based on best 4 GCE
'N' level subjects,
including subject
prerequisite and bonus
points*

Early Admission Exercise (EAE)

** based on interest &
passion, subject to
interviews, aptitude tests
& portfolio reviews*

ITE

2-Year Nitec Course:

- Focus on hands-on learning.
- Progress to Higher Nitec / Poly,
ITE Tech Dip / Work Study Dip
[subject to GPA requirements]

3-Year Higher Nitec

Selected courses from:

- Sch of Biz & Services &
- Sch of Electronics & Info-comm Tech

*Note: N(A) students who secured ITE EAE offers
will still be eligible for DPP and PFP.*



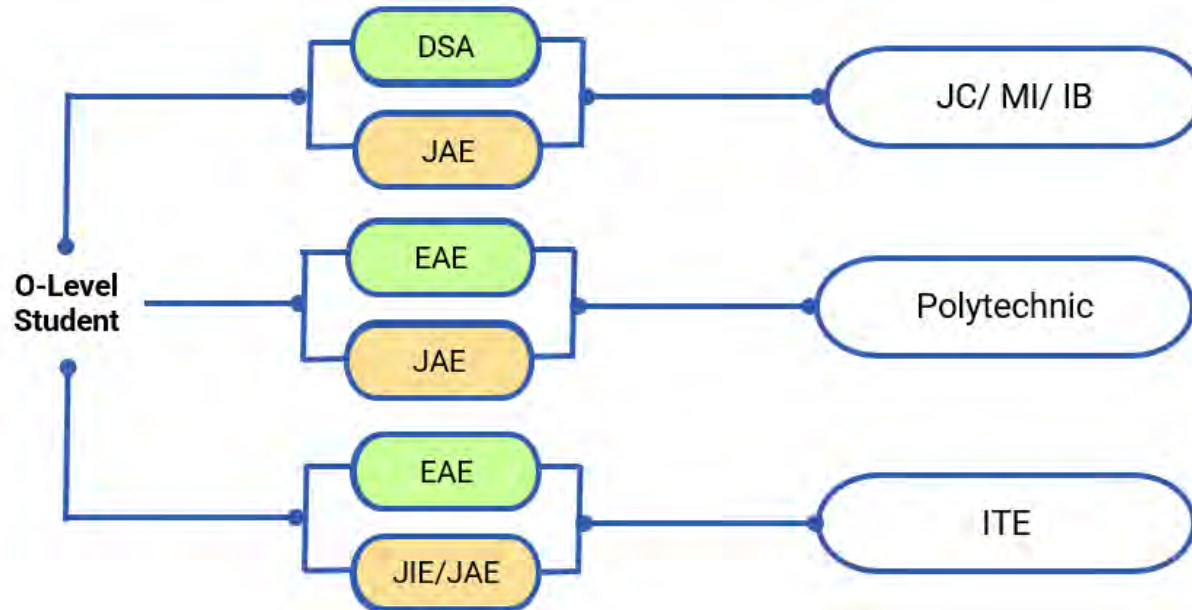
Kuo Chuan Presbyterian Secondary School



2 Types of Admission Exercises

Aptitude-Based: DSA/EAE

Merit-Based: JIE / JAE



Kuo Chuan Presbyterian Secondary School



Aptitude-based Admissions

Direct School Admissions (DSA) – JC

Allows students to apply to a DSA school **before** taking GCE O-Level examinations

Students can apply based on their **talent in sports, CCAs & specific academic areas**

Students will have to prepare specific **write-ups** and a **portfolio showcasing their accomplishments, skills and experiences**

Interviews, aptitude tests and/or auditions may be conducted as part of the assessment

Early Admissions Exercise (EAE) – POLY/ITE

Allows students to apply for and receive conditional offers for admission to Poly/ITE **prior** to receiving their final grades

Allows Poly/ITE greater flexibility to select & admit students based on their **aptitude and interests**, apart from academic grades

Students will have to prepare specific **write-ups** and a **portfolio showcasing their accomplishments, skills and experiences**

Interviews, aptitude tests and/or auditions may be conducted as part of the assessment



Kuo Chuan Presbyterian Secondary School



ECG Exploration



Booking link:

<https://go.gov.sg/ecg-appt-mslisa-kcpss>

Venue: Aspiration Corner @ Library

When: Mondays and Wednesdays,
8:30am to 5:00pm

Email: lim_yin_leng_lisa@schools.gov.sg

**Come chat with
ECG counsellor Ms Lisa Lim**



Kuo Chuan Presbyterian Secondary School

JOIN THE PSG



<https://go.gov.sg/kcpss-psgmember-registration-form>



Kuo Chuan Presbyterian Secondary School



Like, Share & Follow!



Follow us on our school's social media platforms:

- Instagram
@kuo_chuan_presbyterian_sec
- Facebook
<https://facebook.com/KCPSShomepage>



Kuo Chuan Presbyterian Secondary School





Kuo Chuan Presbyterian Secondary School



Thank
you!

